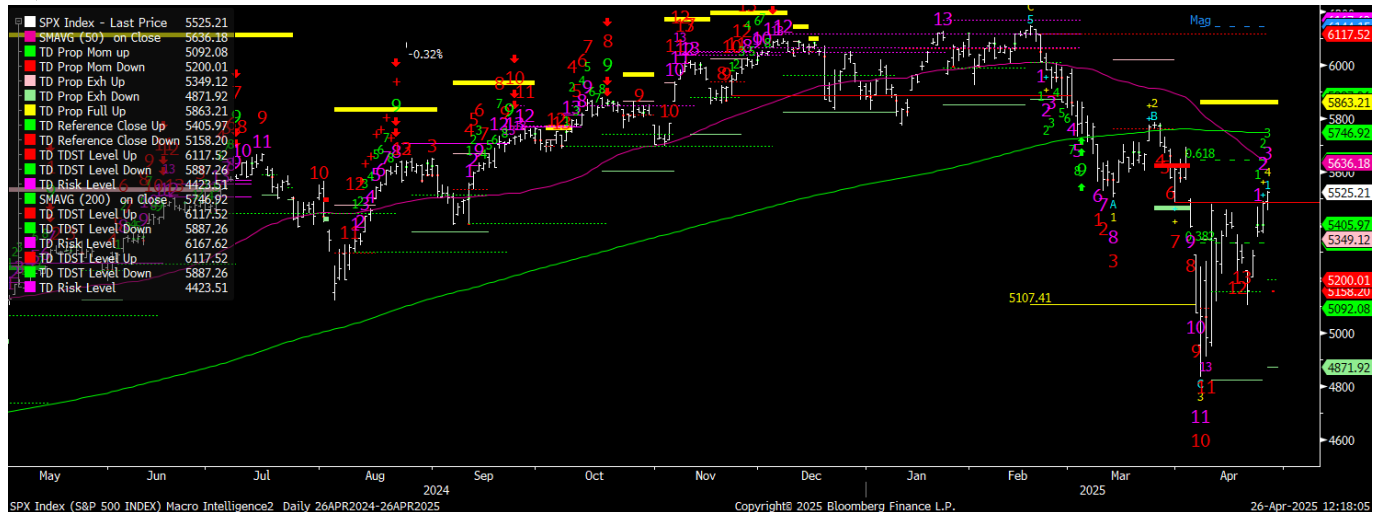


Dow Jones-INDU

The Dow triggered a bullish price flip, putting bulls in control short term. This is a countertrend rally inside a broader structural downtrend, so treat strength tactically. Next resistance levels line up at 41,964 and then 42,010. All things being equal, the larger trend remains lower—this is just a rally within it.

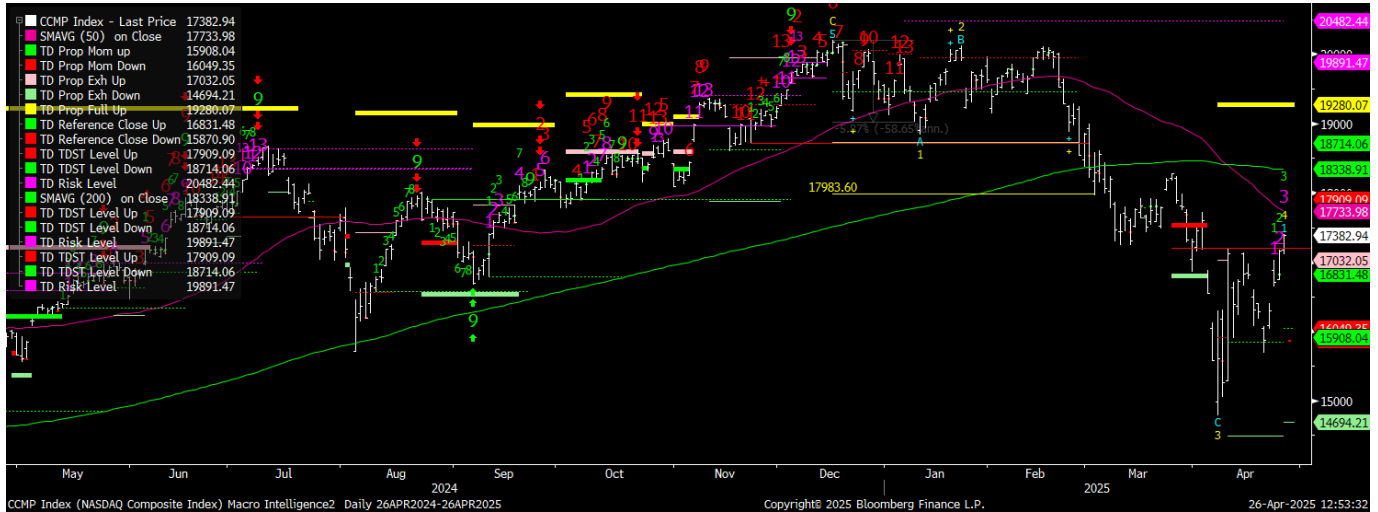
INDU



Nasdaq Composite-CCMP

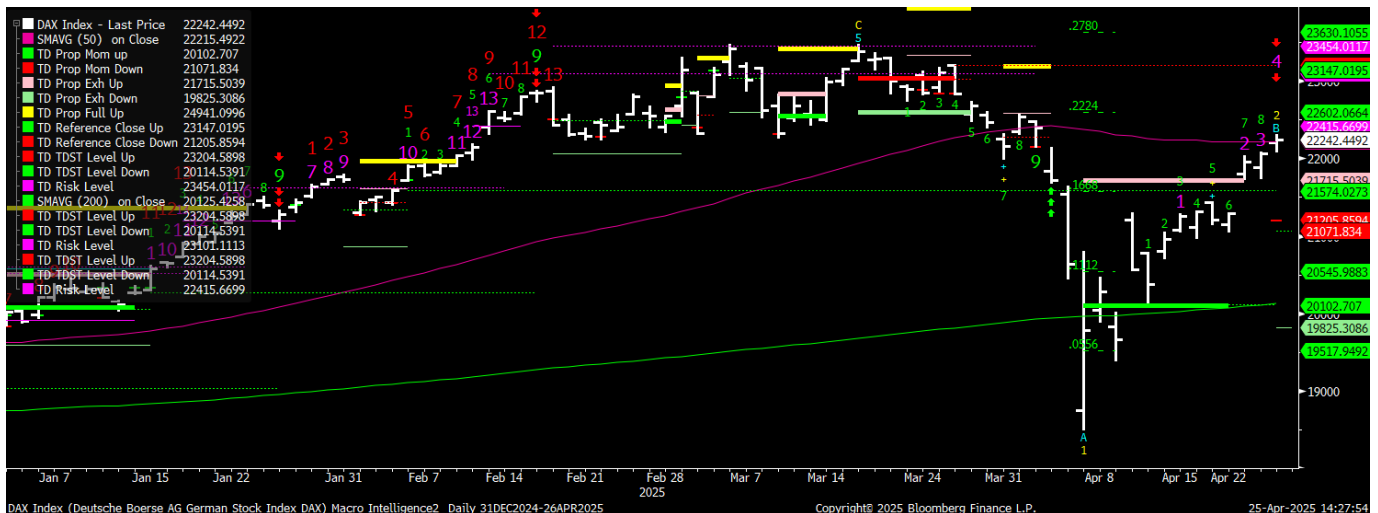
On April 14th, we highlighted the setup for a powerful countertrend rally in the NASDAQ Composite, noting that structure was weak but a TD 9 Buy was about to print on the weekly chart. The initial pullback proved to be a buying opportunity. Last week, a bullish price flip and a close above the TD Reference Close confirmed the shift—putting bulls firmly in control in the short term. Next upside targets are 17,909, followed by a retest of the 200-day moving average at 18,338. Structure has improved, but keep perspective—this rally is emerging from deep oversold conditions, not the start of a fresh secular uptrend.

Nasdaq Composite-CCMP



DAX FUTURE (DAX INDEX)

A perfected TD 9 Sell Setup printed Friday on the daily —normally a setup for a 1-4 session pause. But this isn't just a tactical trade. Structurally, the DAX has **confirmed a trend shift to the upside**. The TD signal marks exhaustion within a newly emerging bullish phase—not the end of it. **Next upside targets: 22,602 and then 23,204.**



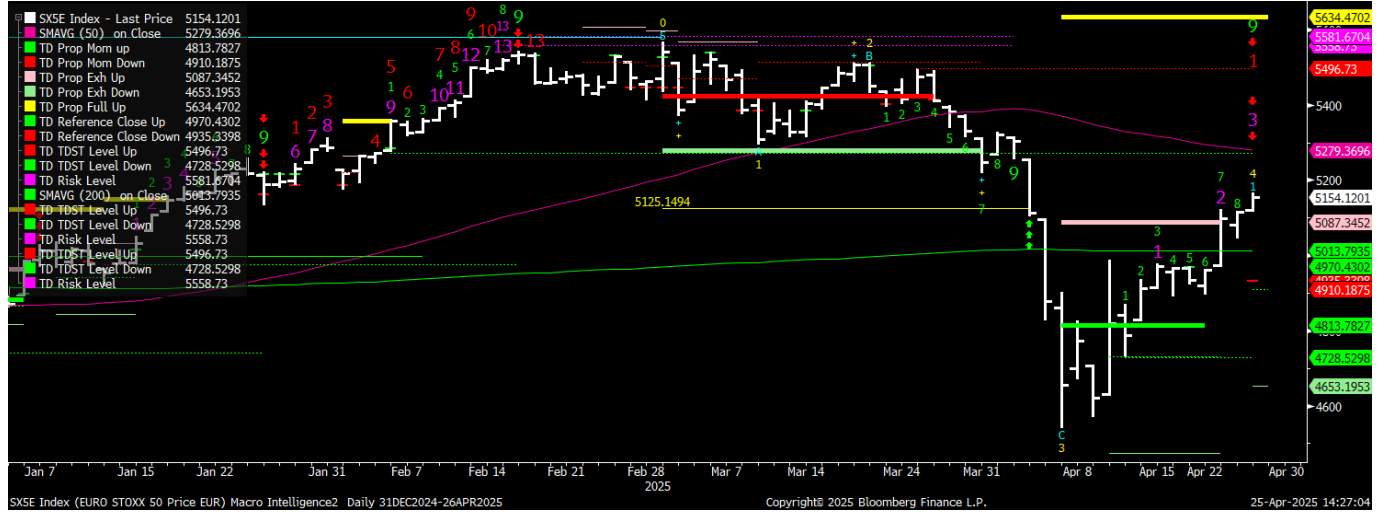
EURO STOXX 50 (SX5E INDEX)

Last week's rally pushed SX5E decisively back above the 200-day moving average—a major technical level that now flips to support. With today's perfected TD 9 Sell Setup on the daily, we might see short-term

Warning: No reproduction, transmission or distribution permitted without consent of Macro Intelligence 2 Partners LLC ("MI2 Partners™"). Unauthorized review, dissemination, distribution or copying of this message is strictly prohibited and could subject you and your firm to liability and substantial fines and penalties. If you would like clarification please contact support@mi2partners.com. The material contained herein is the sole opinion of MI2 Partners™. This research has been prepared by MI2 Partners™ using information sources believed to be reliable. Such information has not been independently verified and no guarantee, representation or warranty, express or implied, is made as to its accuracy, completeness or correctness. It is intended for the sole use by the recipient to whom it has been made available by MI2 Partners™. The delivery of this report to any person shall not be deemed a recommendation by MI2 Partners™ to effect any transaction in any securities discussed herein.

softness. But make no mistake—the trend has turned. The TD setup confirms it. **Upside targets sit at 5,297, then 5,496.**

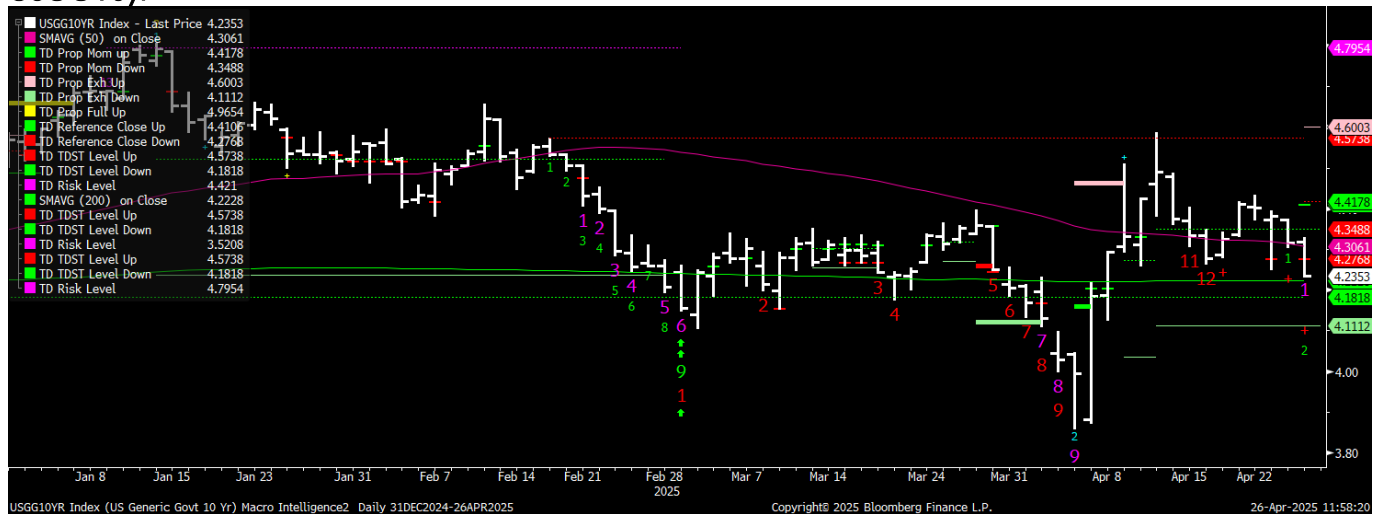
SX5E



US 10-YR YIELD (USGG10YR)

The 10-year is sitting at a TD Sequential **12+** count on the daily chart. A **bearish price flip and close below the TD Reference Close** would put the bears firmly in control. The countertrend rally over the past few weeks has **failed to confirm** any real trend reversal—this still looks like a corrective bounce within a broader downtrend. **Watch for a retest of 4.02%** to complete the TD 13 and set the stage for the next move lower.

USGG10yr

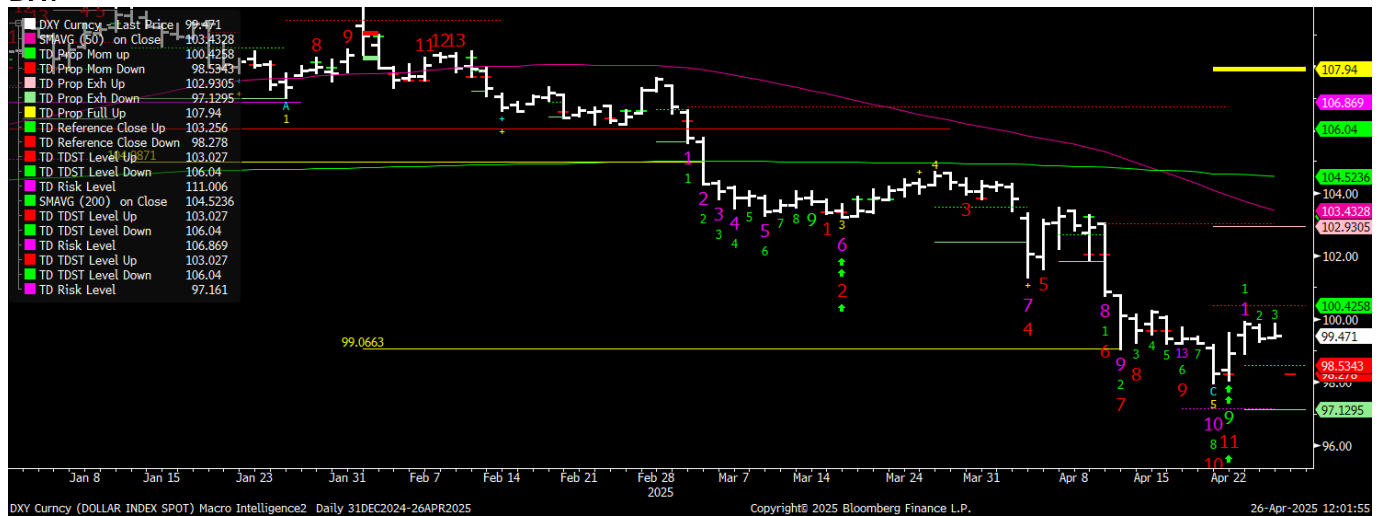


Warning: No reproduction, transmission or distribution permitted without consent of Macro Intelligence 2 Partners LLC ("MI2 Partners"). Unauthorized review, dissemination, distribution or copying of this message is strictly prohibited and could subject you and your firm to liability and substantial fines and penalties. If you would like clarification please contact support@mi2partners.com. The material contained herein is the sole opinion of MI2 Partners. This research has been prepared by MI2 Partners using information sources believed to be reliable. Such information has not been independently verified and no guarantee, representation or warranty, express or implied, is made as to its accuracy, completeness or correctness. It is intended for the sole use by the recipient to whom it has been made available by MI2 Partners. The delivery of this report to any person shall not be deemed a recommendation by MI2 Partners to effect any transaction in any securities discussed herein.

US DOLLAR INDEX (DXY)

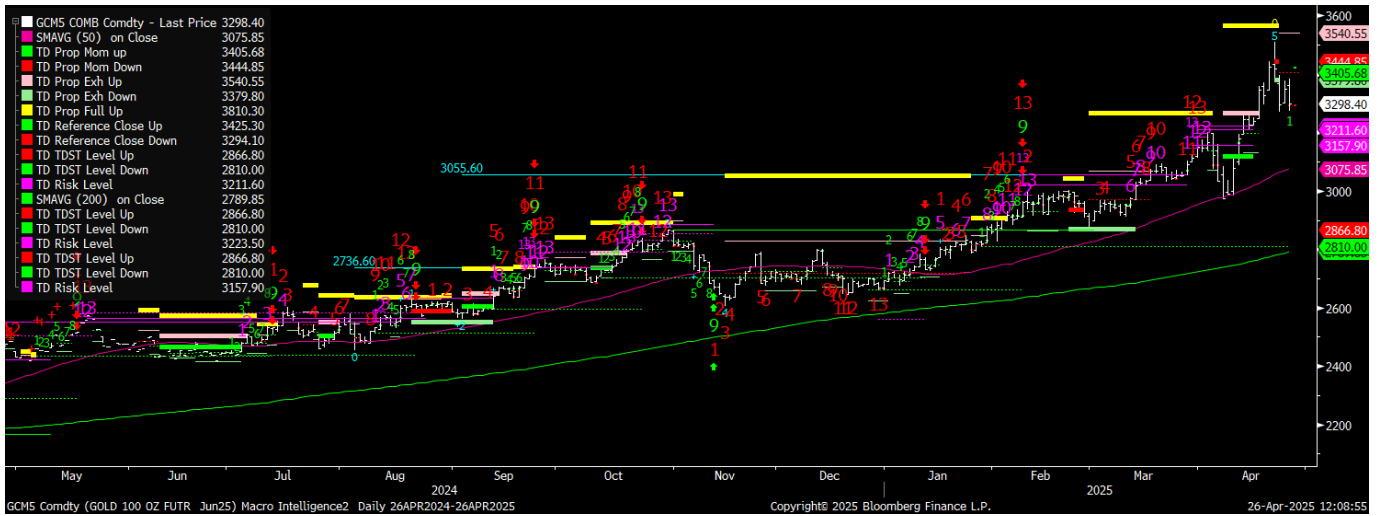
DXY is in a **confirmed downtrend**, with the TD Sequential now at **11 of 13** on the daily chart. Momentum remains firmly bearish. **Downside targets are 98.53 and then 97.13**. No signs yet of exhaustion—trend pressure still points lower.

DXY



GOLD (XAUUSD)

Gold posted a **perfected TD 13 Sell Setup** on the weekly chart last week. Since then, the market's bearish price flip has run into **profit-taking**, leaving gold looking **vulnerable** here. It got extended into record territory—and now the unwind is starting. **A close below 3,294 followed by a lower open/lower low/down close would officially take the bulls out of the driver's seat...** Fundamentally, headlines around easing trade tensions between the U.S. and China have undercut haven demand. Despite still being up ~25% YTD, the rally is showing cracks. Gold for immediate delivery slipped back to **\$3,271** after tagging highs north of \$3,500 earlier in the week. Watch for further pressure if sentiment continues to shift and technical triggers break.



Warning: No reproduction, transmission or distribution permitted without consent of Macro Intelligence 2 Partners LLC ("MI2 Partners™"). Unauthorized review, dissemination, distribution or copying of this message is strictly prohibited and could subject you and your firm to liability and substantial fines and penalties. If you would like clarification please contact support@mi2partners.com. The material contained herein is the sole opinion of MI2 Partners™. This research has been prepared by MI2 Partners™ using information sources believed to be reliable. Such information has not been independently verified and no guarantee, representation or warranty, express or implied, is made as to its accuracy, completeness or correctness. It is intended for the sole use by the recipient to whom it has been made available by MI2 Partners™. The delivery of this report to any person shall not be deemed a recommendation by MI2 Partners™ to effect any transaction in any securities discussed herein.